



# People to Jobs



PROGRESS REPORT — FEBRUARY 2011

7th Annual Edition

## **It's Working Regionally**

Coastal Link provides seamless, inter-regional service along the Route 1 corridor through Milford, Stratford, Bridgeport, Fairfield, Westport, Norwalk, and multiple links to Metro-North train service. A survey conducted by the Westfield Connecticut Post Mall indicated that an astounding 41% of the mall's employees listed the bus as their means of transportation to work. Many of these employees would not be able to get to work without the provision of job access-funded bus services.

## **It's Working in Bridgeport**

Through extended evening and weekend services, expanded geographic coverage and improved frequencies, job access transportation funding has allowed thousands to find new jobs in the Bridgeport Region. Under these programs, Greater Bridgeport Transit has been able to close the mobility gaps that once prevented gainful employment. During 2010, **riders boarded job access-funded services over 585,973 times.**

## **It's Working in Norwalk**

The Norwalk Transit District provided **345,498 trips with job access-funded services** in 2010. These bus services complement Norwalk's core services as they extend the service day into the evening; extend service to seven days a week; and, extend service beyond the boundaries of the City of Norwalk to the greater region. Employment opportunities are more readily available with these service enhancements.



## **It's Working in Stamford**

The People to Jobs collaborative continues to provide residents throughout the Stamford region with transportation to access employment centers in the area. These services have become a staple that people in Stamford have grown to depend on. Without the later night and weekend service provided through the People to Jobs program it would be impossible for many transit users to get to work. In 2010, **there were 186,927 boardings** on CT Transit.

## **It's Working in the Valley**

Valley Transit District, working with the People to Jobs collaborative, successfully operates the Bridgeport Avenue commuter connection. This service connects riders of Greater Bridgeport Transit (15) and CTTRANSIT New Haven (F6) to employers along the Bridgeport Avenue corridor in Shelton. Providing a much needed link for riders in the Valley, the service has connected workers who rely on public transportation to their workplace and has had great success. The Bridgeport Avenue commuter connection has continued to grow, showing an **increase in ridership of 4%** in 2010.

<over>



# People to Jobs



People to Jobs, a project of The WorkPlace, Inc., began in 1996 as a Regional Transportation Task Force, a pilot to improve access to jobs for low-income individuals and anyone depending on public transportation. Now it is an integral part of the transportation system, getting thousands of people throughout Southwestern Connecticut to and from work. Without these vital services, those who have become increasingly reliant upon public transportation could lose their jobs or be unable to access employment opportunities.

Effective and accessible public transportation makes a difference in the lives of people living and working in our communities. People to Jobs continues its efforts to reduce transportation barriers to employment, working with the business community to ensure that employees can get to work. Services funded through the Connecticut Department of Transportation's "Transit Operations" budget and through the Connecticut Department of Social Services "Transportation for Employment Independence Program (TEIP)" have provided the critical link to jobs throughout the region.

<over>

## How You Can Help

- Public transportation is essential for mobility and for the economy.
- Employers and the community alike depend on public transportation to access employment opportunities.
- Funding through the Connecticut Department of Transportation's "Transit Operations" budget and through the Connecticut Department of Social Services "Transportation for Employment Independence Program (TEIP)" has been reduced.
- Now, more than ever, please preserve the State's investment in critical job access-funded services that benefit employers and the people they depend on each day.

## Real People Who Rely On Public Transportation

### Employer



SureSource, Inc.

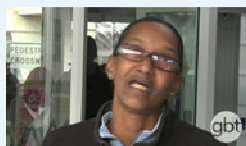
Eunice Seeley

Human Resources Manager

*"The bus has enabled employees to work longer shifts and has increased reliability. Without the bus service our company would lose employees."*

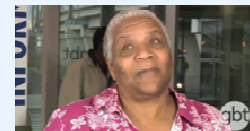
### People to Jobs Riders

*"I use the bus to get back and forth to work and to go shopping. I use the bus for everything!"*



*"I take it to work, I take it to pick up my niece at the mall, I take it shopping, I take it to everywhere I need to go."*

*"I love the system, I love it. I use the bus to go to work and everything I need to do because I'm a senior and I don't have a car."*



*"I take it to work, I take it to pick up my niece at the mall, I take it shopping, I take it to everywhere I need to go."*

